



# The Compartments In My Department



# The Compartments In My Department



“Train up a child  
in the way he  
should go...”

PROVERBS 22:6

The background of the image is a landscape. The top half is a clear blue sky. In the middle, there is a white banner with a black border. Below the banner, there are snow-capped mountains. The bottom of the image shows a dark, possibly wet, surface.

# SEEK FIRST

HIS KINGDOM & HIS RIGHTEOUSNESS

# SEEK FIRST

Matthew 6:33



A close-up photograph of a person's hand holding a small, vibrant green seedling with several leaves. The seedling is growing out of a mound of dark, rich soil. The background is a bright, cloudy sky, suggesting a hopeful or spiritual atmosphere. The text is overlaid on the image in various fonts and colors.

# *whatever*

your hand finds to do

*do it with your* might ;

for there is no **work** or device  
or **knowledge** or wisdom

*in the grave where you are going.*




# FRANK'S NURSERY & CRAFTS



gettyimages®

Tim Boyle



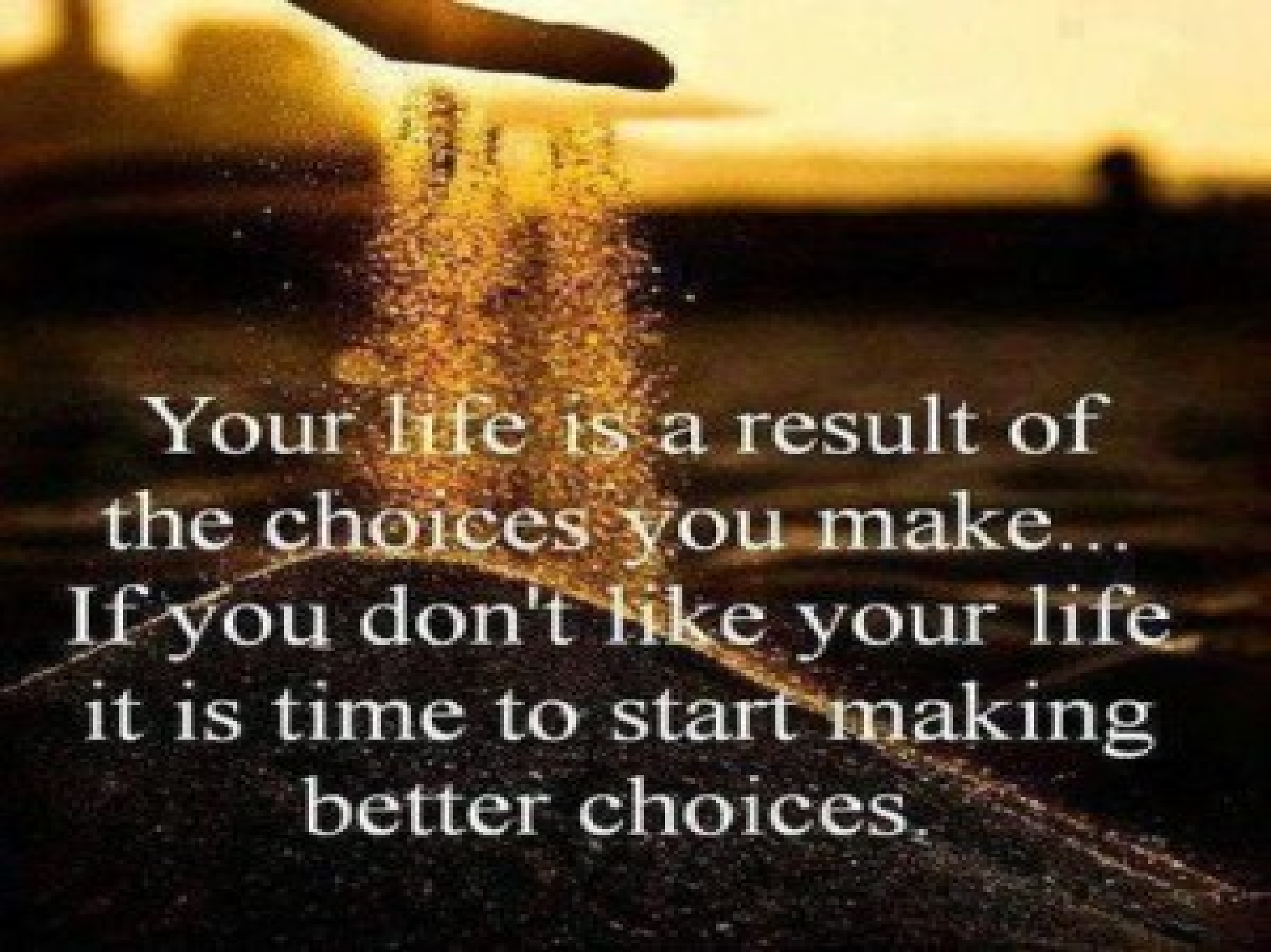
A photograph of a deer standing on a grassy hill. The sky is filled with large, dramatic clouds, with a bright light source breaking through in the upper center. The overall mood is contemplative and serene.

We never noticed the beauty  
because we were too busy  
trying to create it.

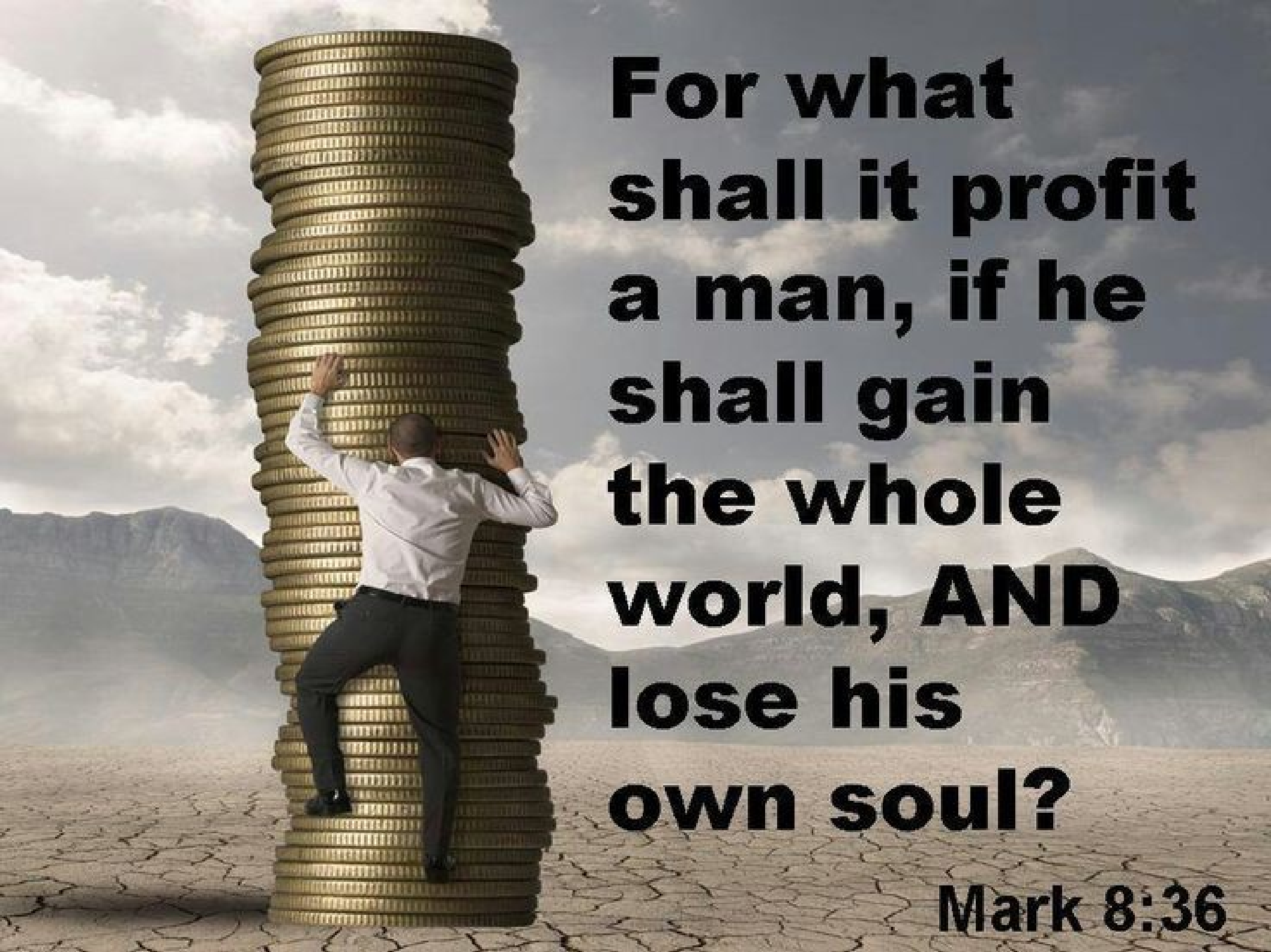
**Everyone you meet is  
fighting a battle you  
know nothing about.**

**Be kind.**

**Always.**



Your life is a result of  
the choices you make...  
If you don't like your life  
it is time to start making  
better choices.



**For what  
shall it profit  
a man, if he  
shall gain  
the whole  
world, AND  
lose his  
own soul?**

**Mark 8:36**



TEACH US TO  
**NUMBER OUR DAYS**  
ARIGHT, THAT WE  
MAY GAIN A HEART  
OF WISDOM.

PSALM 90:12





**Mat 6:11**

**Give us this day our  
daily bread.**

# **John 7:37b-38**

**37b.) If any man thirst, let him come unto me, and drink.**

**38) He that believeth on me, as the scripture hath said, out of his belly shall flow rivers of living water.**



# 1 Corinthians 13

A scenic view of a waterfall cascading over a rocky cliff into a pool of water, with a sunset sky in the background. The waterfall is the central focus, with water falling from a high point on the right side of the frame. The sky is a mix of orange, pink, and blue, indicating a sunset or sunrise. The surrounding landscape is lush and green, with mossy rocks and grass. A path or road is visible on the left side of the image, leading towards the waterfall.



A scenic view of a waterfall cascading over a rocky cliff into a pool of water, with a sunset sky in the background. The waterfall is the central focus, with water falling from a high point on the right side of the frame. The sky is a mix of orange, pink, and blue, indicating a sunset or sunrise. The surrounding landscape is lush and green, with a path visible on the left side of the image.

**The 16 of 13**



**Love  
Suffers Long**





**Love  
Is Kind**



A vibrant, long-exposure photograph of a multi-tiered waterfall cascading over moss-covered rocks in a lush forest. The water appears as a soft, white veil against the dark, green moss and surrounding foliage. A large, fallen log lies horizontally across the lower part of the frame, partially submerged in the pool of water at the base of the falls. The text "Love Does not envy" is overlaid in a bold, blue, serif font with a black outline, centered across the middle of the image.

**Love  
Does not envy**





**Love  
Does not parade  
itself**



A long waterfall cascading over rocks in a lush green forest. The water is a vibrant blue, and the surrounding trees are a deep green. The scene is peaceful and serene.

**Love  
Is not puffed up**







**Love  
Does not behave  
rudely**



**Love  
Does not seek its  
own**





**Love**  
**Is not easily provoked**





**Love  
Keeps no account  
of evil**





**Love  
Does not rejoice in  
iniquity**



A vibrant, high-contrast photograph of a powerful waterfall. The water is captured in motion, creating a series of white, frothy cascades as it falls over dark, moss-covered rocks. The surrounding forest is dense and lush, with various shades of green foliage framing the waterfall. The sky above is a deep blue with scattered white clouds. The overall scene conveys a sense of natural beauty and tranquility.

**Love  
Rejoices in the  
Truth**





**Love  
Bears all things**





**Love  
Believes all things**





**Love  
Hopes all things**




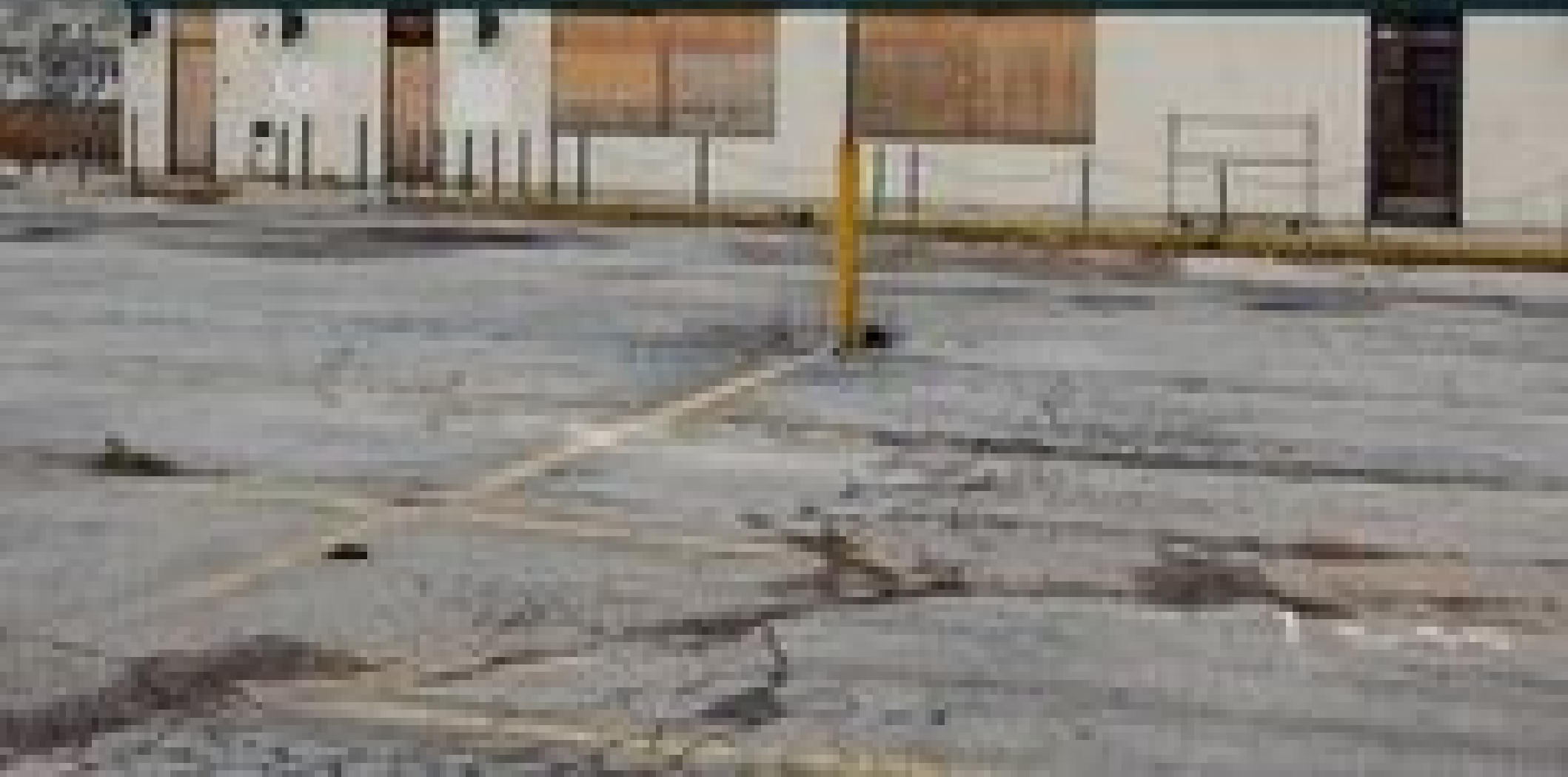


**Love**  
**Endures all things**

A scenic waterfall cascading over mossy rocks, surrounded by lush greenery and vibrant autumn foliage in shades of yellow, orange, and red. The water is captured in motion, creating a soft, blurred effect. The scene is set in a dense forest with various plants and trees, some of which are in full autumn color. The overall atmosphere is serene and natural.

**Love  
Never Fails**

**FRANK'S** NURSERY  **CRAFTS**





# **1John 2:16-17**

**16) For all that is in the world, the lust of the flesh, and the lust of the eyes, and the pride of life, is not of the Father, but is of the world.**

**17) And the world passeth away, and the lust thereof: but he that doeth the will of Elohim abideth for ever.**



# 1 Corinthians 6:9-11

- 9) Know ye not that the unrighteous shall not inherit the kingdom of God? Be not deceived: neither fornicators, nor idolaters, nor adulterers, nor effeminate, nor abusers of themselves with mankind,
- 10) Nor thieves, nor covetous, nor drunkards, nor revilers, nor extortioners, shall inherit the kingdom of God.
- 11) And such were some of you: but ye are washed, but ye are sanctified, but ye are justified in the name of the Lord Jesus, and by the Spirit of our God.







# **A Mothers Teaching**



